

---

# Clinical Guideline

---

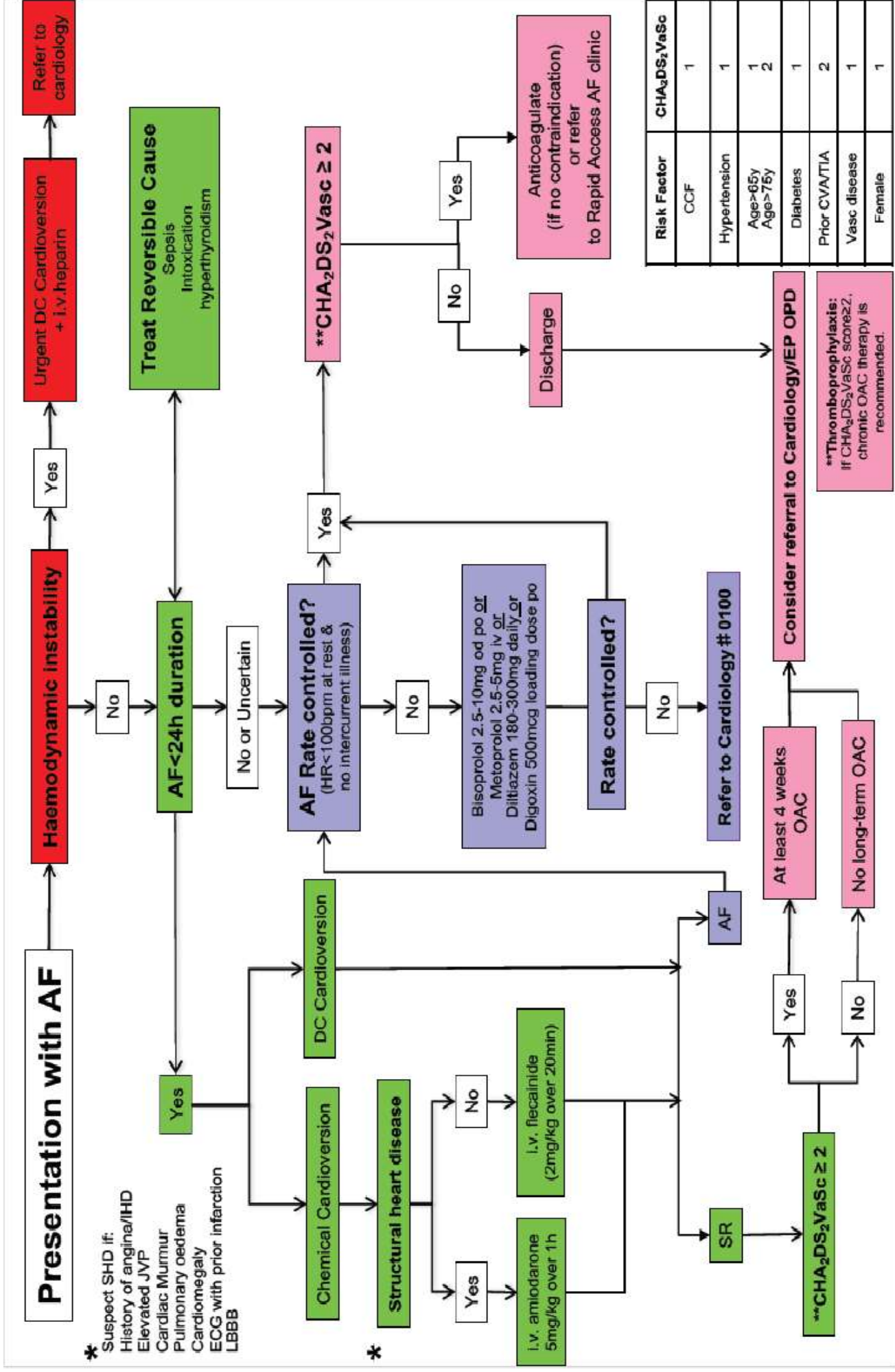
## *Acute Management of Atrial Fibrillation*

### Summary

Atrial fibrillation (AF) is a common presenting complaint to the A&E department and a prevalent comorbidity in patients admitted to hospital for other cardiac and non-cardiac reasons. This guidance provides a rational approach to the acute management of newly-diagnosed AF. It will not be appropriate for every possible presentation of AF and the reader is encouraged to seek specialist cardiological advice when needed.

Document Detail	
Document Type	Guidelines
Document name	Acute Management of Atrial Fibrillation
Document location	GTi Clinical Guidance Database
Version	2.0
Effective from	<i>06 February 2019</i>
Review date	<i>06 February 2022</i>
Owner	Cardiovascular
Author	Prof. Mark O'Neill, Cardiology Consultant
Approved by, date	Drug & Therapeutics Committee, <i>February 2019</i>
Superseded documents	1.0
Related documents	
Keywords	Atrial, anticoagulation, rate, DC, fibrillation, arrhythmia, rhythm, OAC, AF, cardioversion
Relevant external law, regulation, standards	

Change History		
Date	Change details, since approval	Approved by
18/01/19	Abbreviation changes, no change to pathway. Approved by Cardiovascular	CVS



**Abbreviations:** AF=atrial fibrillation; DC Cardioversion=Direct Current Cardioversion; iv=intravenous; SHD=structural heart disease; IHD=ischaemic heart disease; JVP=jugular venous pressure; ECG=electrocardiogram; LBBB=left bundle branch block; SR=sinus rhythm; OAC=oral anticoagulant; EP OPD=Electrophysiology outpatients department; INR=international normalised ratio